

21806 44 Avenue,
Langley, B.C.

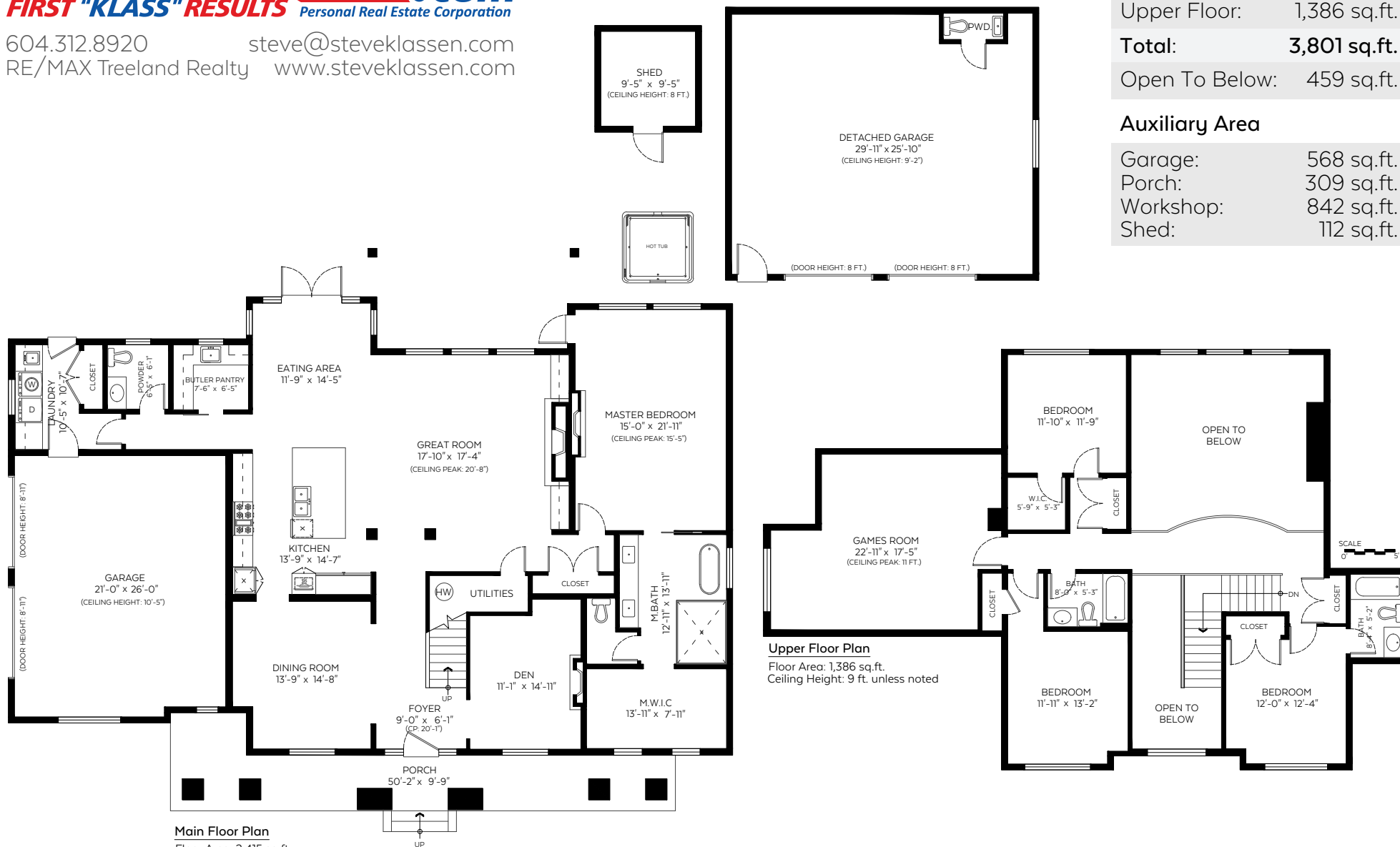
Main Floor: 2,415 sq.ft.
Upper Floor: 1,386 sq.ft.

Total: 3,801 sq.ft.

Open To Below: 459 sq.ft.

Auxiliary Area

Garage: 568 sq.ft.
Porch: 309 sq.ft.
Workshop: 842 sq.ft.
Shed: 112 sq.ft.



Measured on: August 24, 2020

The floor plan is not suitable for architectural/construction and is covered under E&O. © Excelsior Measuring Inc. 2020. All rights reserved for Excelsior Measuring Inc. Users shall not publish and distribute such material (in whole or in part) and/or incorporate it in other works in any form.