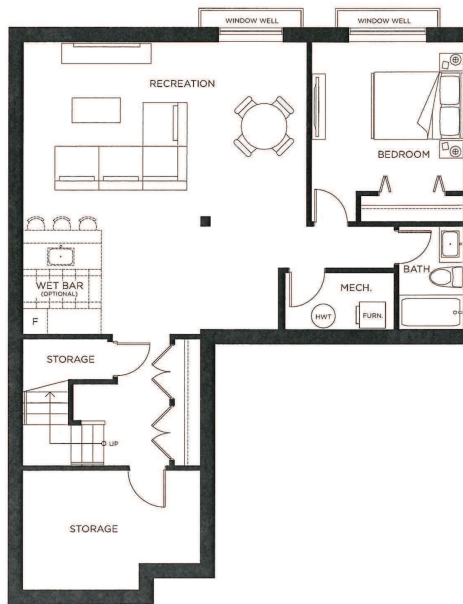




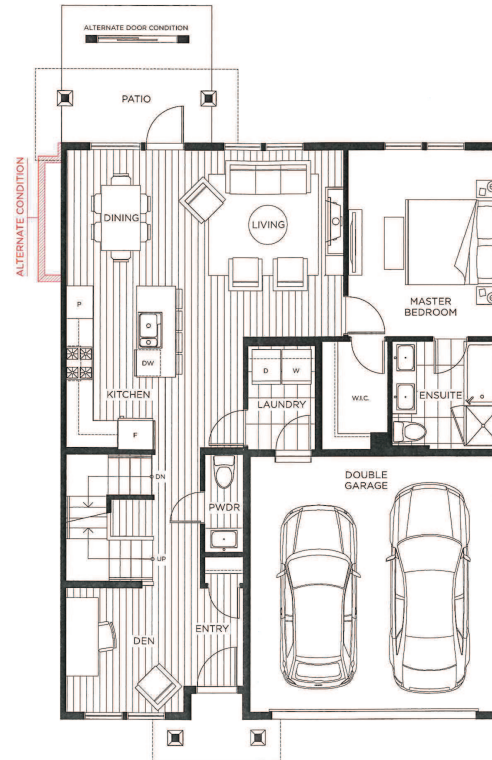
HERITAGE

MADE IN
MURRAYVILLE

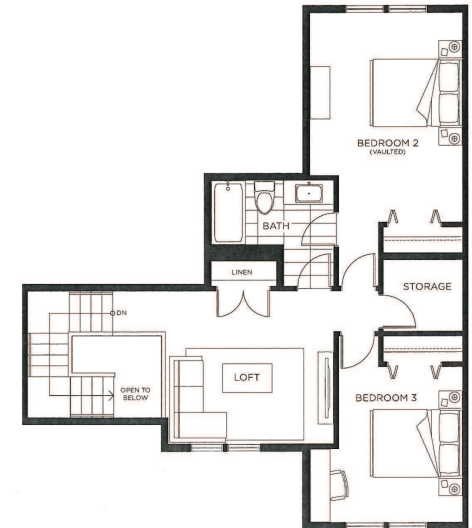
FRONT ENTRY
3-4 BEDROOM | 2.5 BATH
2,871 - 2,888 SQFT



1,072-1,102 SQFT
LOWER FLOOR



1,085-1,114 SQFT
MAIN FLOOR



672-715 SQFT
UPPER FLOOR



Infinity Properties reserves the right to make modifications and changes to the building design, elevations, dimensions, specifications, features and prices, without prior notification. Decks, patios, stairs and windows may vary based on site conditions. All sizes and dimensions are approximate and based on Architectural measurements. Reverse and/or mirror plans occur throughout the development. Please see disclosure for specific offering details once available. This is not an offering for sale. E & O. E.

PHONE 778.277.1611 | MADEINMURRAYVILLE.CA