

4605 222A Street,
 Langley, B.C.

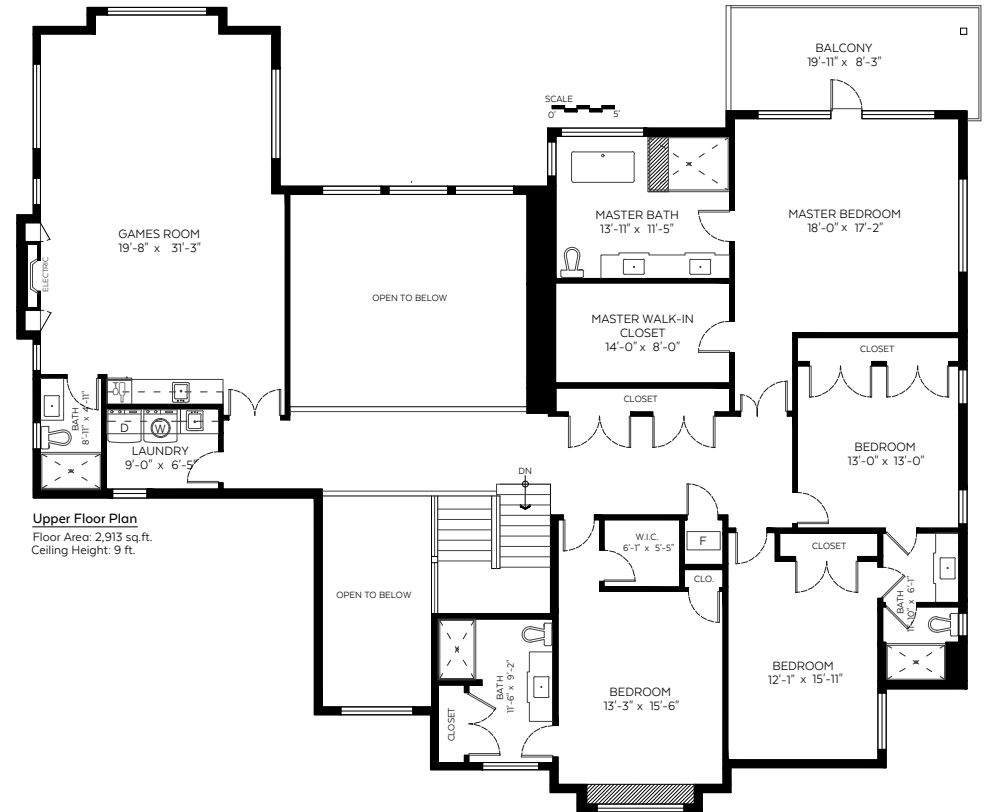
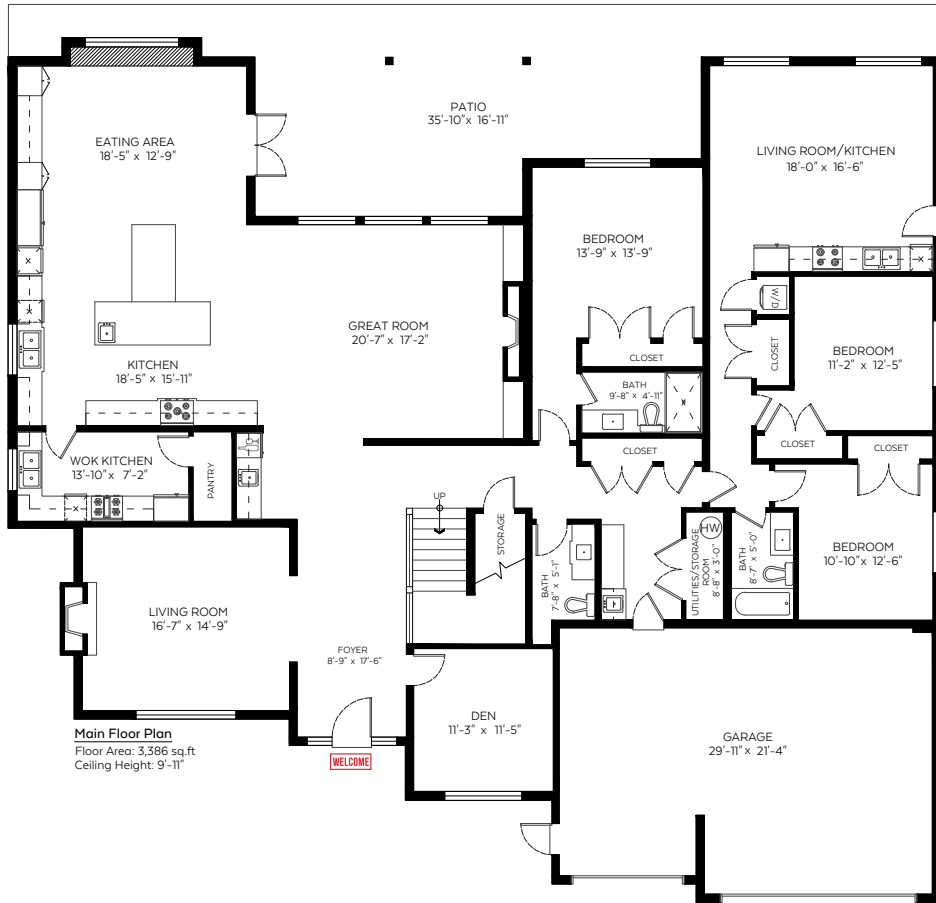
Main Floor: 3,386 sq.ft.
 Upper Floor: 2,913 sq.ft.

Total: 6,299 sq.ft.

Open To Below: 503 sq.ft.

Auxiliary Area

Garage: 665 sq.ft.
 Patio: 707 sq.ft.
 Balcony: 165 sq.ft.



Measured on: July 5, 2019



NORTH

